

Figure 3, Source Data 1. Original membranes corresponding to Figure 3, panel C.

Figure 3. BKC directly binds to DNA polymerases. A-B. *In silico* molecular docking of bakuchiol in the predicted active site structures of human DNA Pol δ and ϵ , respectively. **C-D.** MCF-7 cells were treated with DMSO, 40 μ M BKC or 10 μ M Aphidicolin for 2 hours prior to the cellular thermal sensitivity shift assay (CETSA) at indicated temperature, as described in the Materials and Methods. Levels of POLD1 (Pol δ ; panel C) and POLE (Pol ϵ ; panel D) catalytic subunits were detected by western blotting. Mean and SEM of three independent experiments are shown. The p-values were determined by two-tailed paired t-test.

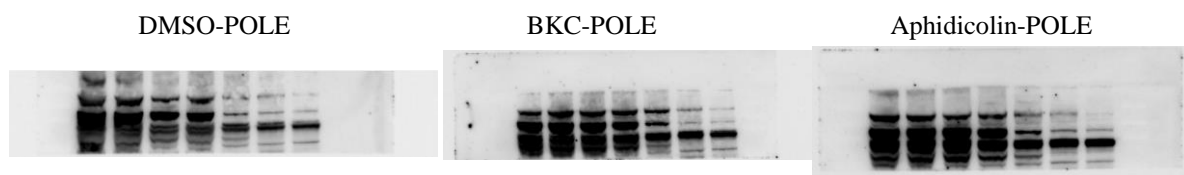


Figure 3, Source Data 1. Original membranes corresponding to Figure 3, panel D.

Figure 3. BKC directly binds to DNA polymerases. A-B. *In silico* molecular docking of bakuchiol in the predicted active site structures of human DNA Pol δ and ϵ , respectively. **C-D.** MCF-7 cells were treated with DMSO, 40 μ M BKC or 10 μ M Aphidicolin for 2 hours prior to the cellular thermal sensitivity shift assay (CETSA) at indicated temperature, as described in the Materials and Methods. Levels of POLD1 (Pol δ ; panel C) and POLE (Pol ϵ ; panel D) catalytic subunits were detected by western blotting. Mean and SEM of three independent experiments are shown. The p-values were determined by two-tailed paired t-test.